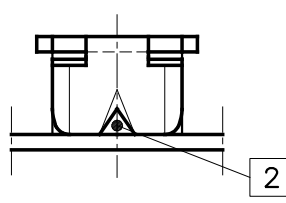
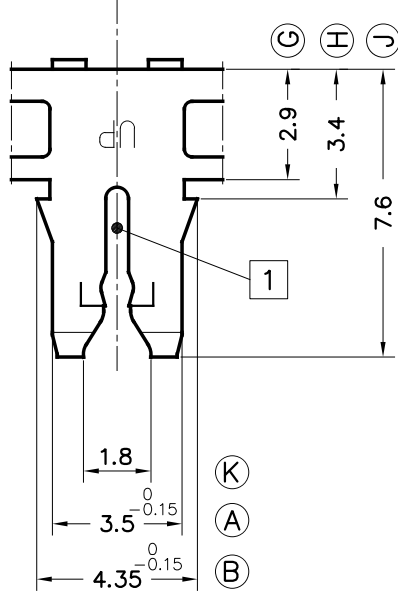
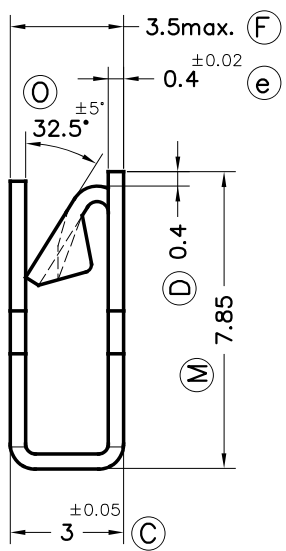
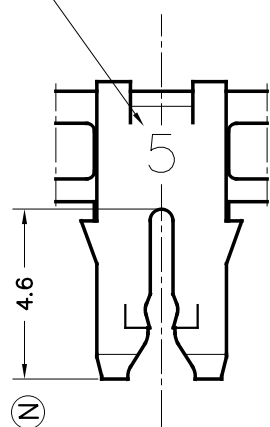


Number "5" identifies the magnet wire range



**Notes:**

- [1] Copper wires: Slot allows insertion of single magnet wire.  
Aluminium wires: Slot may accept single aluminium magnet wires. Consult Escubedo for the wire range.
- [2] Allows connection of UP-MATE tabs, as well as rigid or multi-stranded wires

6905.02	Tinplated	CuZn30*	0.38-0.50 mm	- mm	2				00	1st. Edition	20/07/18	
References	Finish	Material	∅Copper Magnet wire	Cable Sq.section	[1]	A	B	C	D	Rev.	Description	Date

<p>ESPECIALITATS ELÈCTRIQUES ESCUBEDO S.A.</p>			<p><b>FEMALE UP-MATE</b></p>					
DWN	VR	20/07/18				<p>SIZE</p> <p>A4v</p>		
CHK	XM	20/07/18	<p>MATERIAL STANDARDS</p> <p>EN 1654*</p>	<p>DIMENSIONAL STANDARDS</p> <p>Specials</p>	<p>GENERAL TOLERANCES</p> <p>±0.2 ±2°</p>	<p>DRW NAME</p> <p>PT6905 "c"</p>		
<p>SCALE</p> <p>5/1</p>						<p>REF.</p> <p>6905.xx</p>		