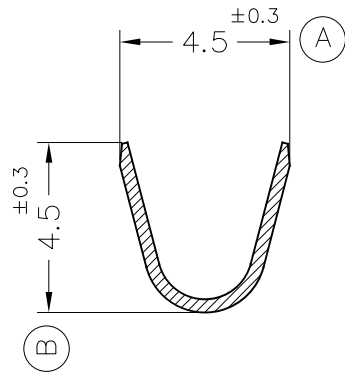
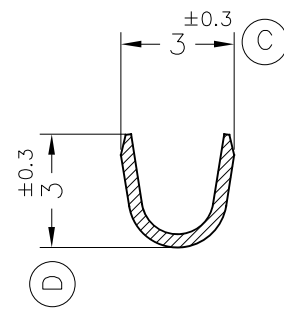


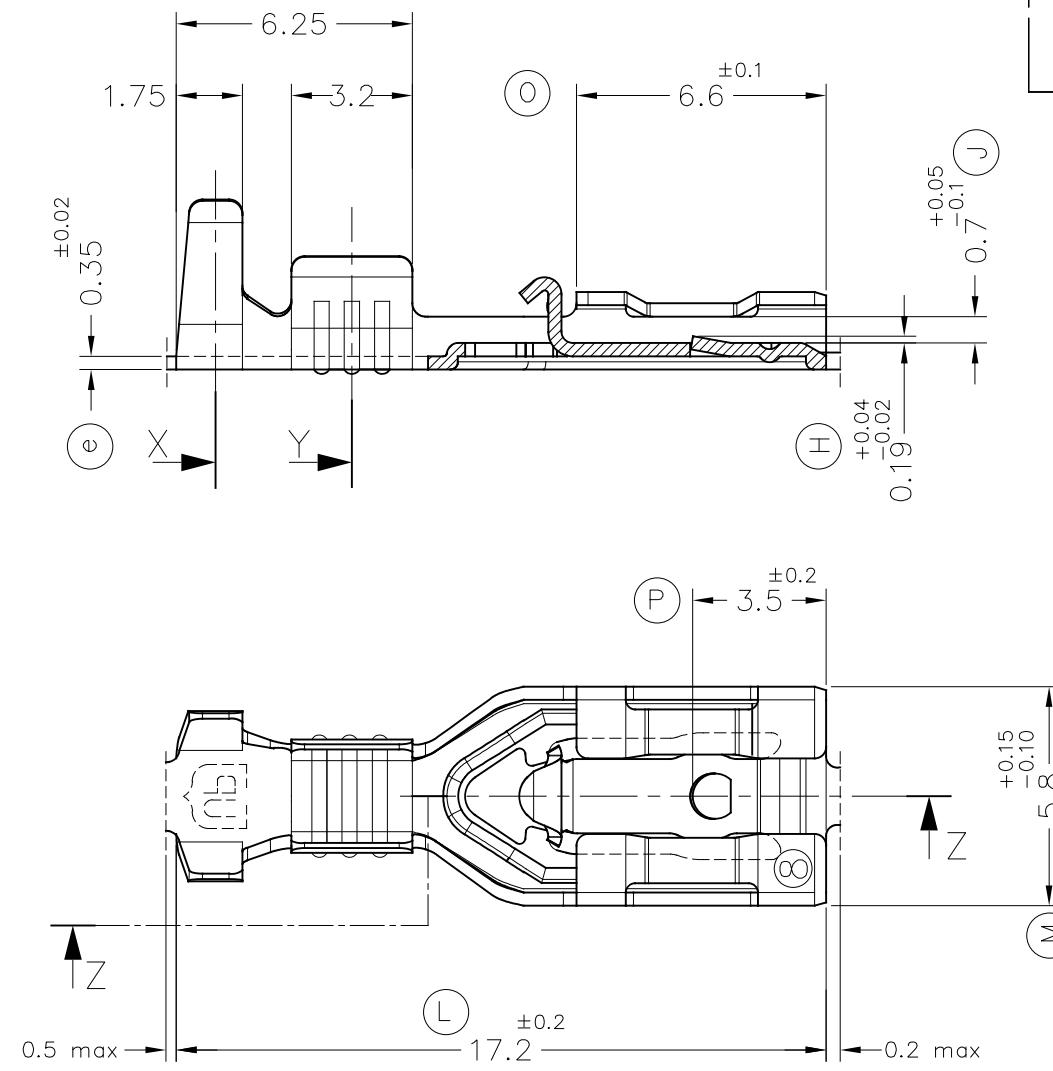
Secc.X



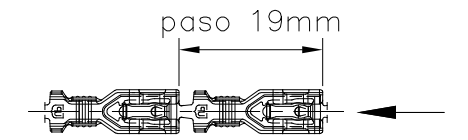
Secc.Y



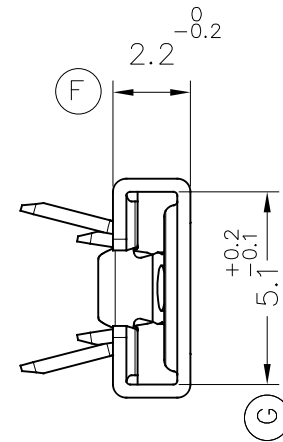
Secc.Z-Z



FORMA DE SUMINISTRO

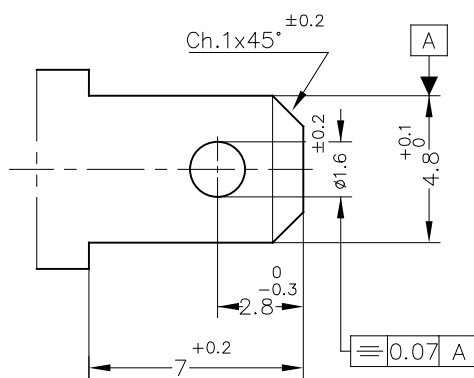
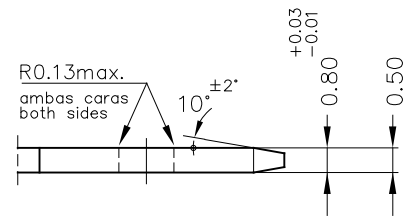


E 1/1



MACHO DE CONEXIÓN SUGERIDO/SUGGESTED MALE

- Material CuZn o Fe-Pre Ni
- Sin rebabas en el agujero/No burrs at hole
- Planitud dentro de 0.03mm en toda su longitud/Flatness within 0.03mm over the whole length
- Agujero simétrico sobre el eje del macho/ Hole be symmetrical about tab acc. drawing specification



E 5:1

4774.51	Pre-Sn	CuNiSi*	0.5 ÷ 1mm ²	1.8 ÷ 2.5mm.	4.8x0.8	02	Mod. cota H y nota palanca	28/08/19
4774.24	Pre-Niq.	Acero						
4774.01	Pre-Sn	Latón*						
4774.00	Natural	CuZn30						
Referencias	Acabados	Material	Sección Conductor	Ø Aislante	Para Macho	Rev.	Modificación	Fecha



TERMINAL HEMBRA Serie 4.8
UP-TPSEK3



DIBUJADO	EP	21/01/16
CONTROL	XM	15/03/16
ESCALA	5/1	⊕

NORMAS MATERIALES	NORMAS DIMENSIONALES	TOLERANCIAS GENERALES
EN 1654 *	Especiales	±0.2 ±2°

FORMATO	A3h
NOMBRE	PT4774 "c"
REF.	4774.xx