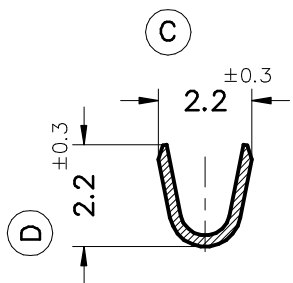
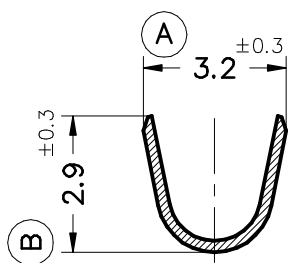


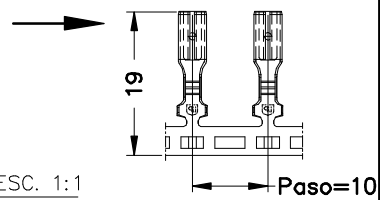
Secc. Z-Z'



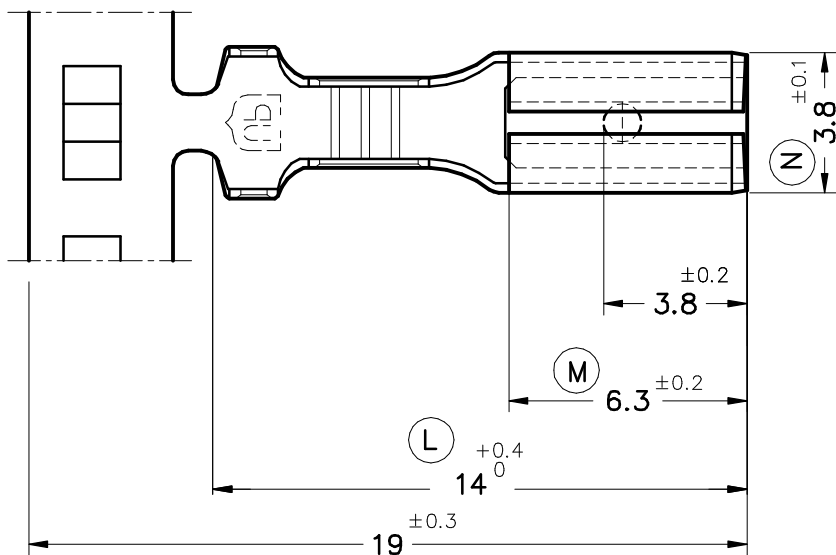
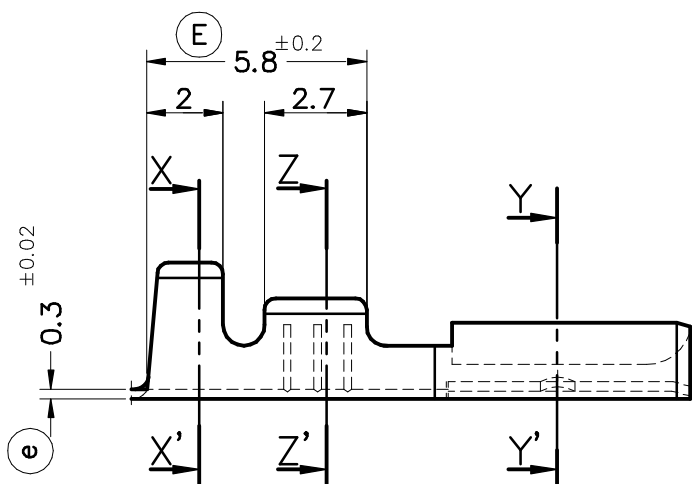
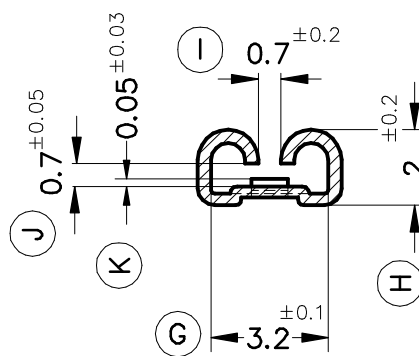
Secc. X-X'



FORMA DE SUMINISTRO



Secc. Y-Y'



4606D31	Pre-estañado	Bronce*	0.3÷0.6mm <sup>2</sup>	1.5÷2mm.	2.8x0.8								00	1ª Edición	14/07/05
4606D30	Natural	CuSn6													
4606D01	Pre-estañado	Latón*													
4606D00	Natural	CuZn30													
Referencias	Acabados	Material	Sección Conductor	∅ Aislante	Para Macho	A	B	C	D	Rev.	Modificación	Fecha			



TERMINAL HEMBRA Serie 2.8



DIBUJADO	V. Roura	12/05/05
CONTROL	F.Adamuz	12/05/05
ESCALA	5/1	

NORMAS MATERIALES  
EN 1654\*

NORMAS DIMENSIONALES  
Din 46247

TOLERANCIAS GENERALES  
±0.2 ±2°

FORMATO	A4v
NOMBRE	PT4606D "c"
REF.	4606Dxx