

4730.**

6.3 MM (.250) UP-SEK TERMINALS



Description Standard self-locking terminals: Manual disconnection

Wire section range 0.50 – 1.00 mm² (AWG 20 - 18)

Max. Insulator Ø 2.5mm.

Materials, Temperature & Contact resistance

Part nr.	Material	Finishing	Max. temp. (C°)	Resist. (mΩ)	UL regulation
4730.00	Brass	Natural	110	0.75	
4730.02	Brass	Tin plated	120	0.50	
4730.30	Bronze	Natural	120	(T.B.D)	-
4730.32	Bronze	Tin plated	130	0.75	-

Notes: Temperatures as per IEC 61210 standard.
Maximal contact resistance: only contact zone

Material thickness 0.40 mm

Max. Rated current

Wire section (mm ²)	Current (A)
0.50	8
0.75	10
1.00	12

Note: Current carrying capacity according to wire size (IEC 60760)



Insertion/Withdrawal forces

1 st . Insertion	35 N Max
1 st . Withdrawal manually	30 N Max
1 st . Withdrawal by the wire	90 N Min

Application tool MN4720

Wire striping length 5.3(±0.5) mm

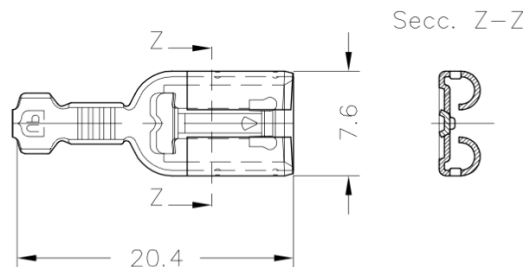
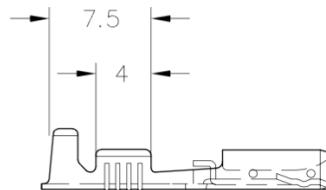
Crimping parameters & Pull out force

Wire section (mm ² ±10%)		Conductor (±0,03)			Insulator (±0,10)	Pull-out force (N)	
Nominal	Actual	Height (mm.)	Width (mm.)		Width (mm.)	DIN64249	ESCUBEDO
0.50	0.45	1.40	2.38		3.33	≥ 80	> 100
0.75	0.71	1.50	2.39		3.35	≥ 120	> 130
1.00	0.91	1.60	2.40		3.36	≥ 160	> 170

Note: Values only valid for the application tool specified upwards. The insulator widths are only indicative as they are dependent on the sheath thickness of the wire used.

Packaging 8000 Pieces on 300 mm. Ø x 160 mm. wide cardboard reel, 22.5 mm terminal chain pitch

Drawing



Approvals

- RoHS Compliant
- UL



Products with (see table above), fulfil UL Regulation

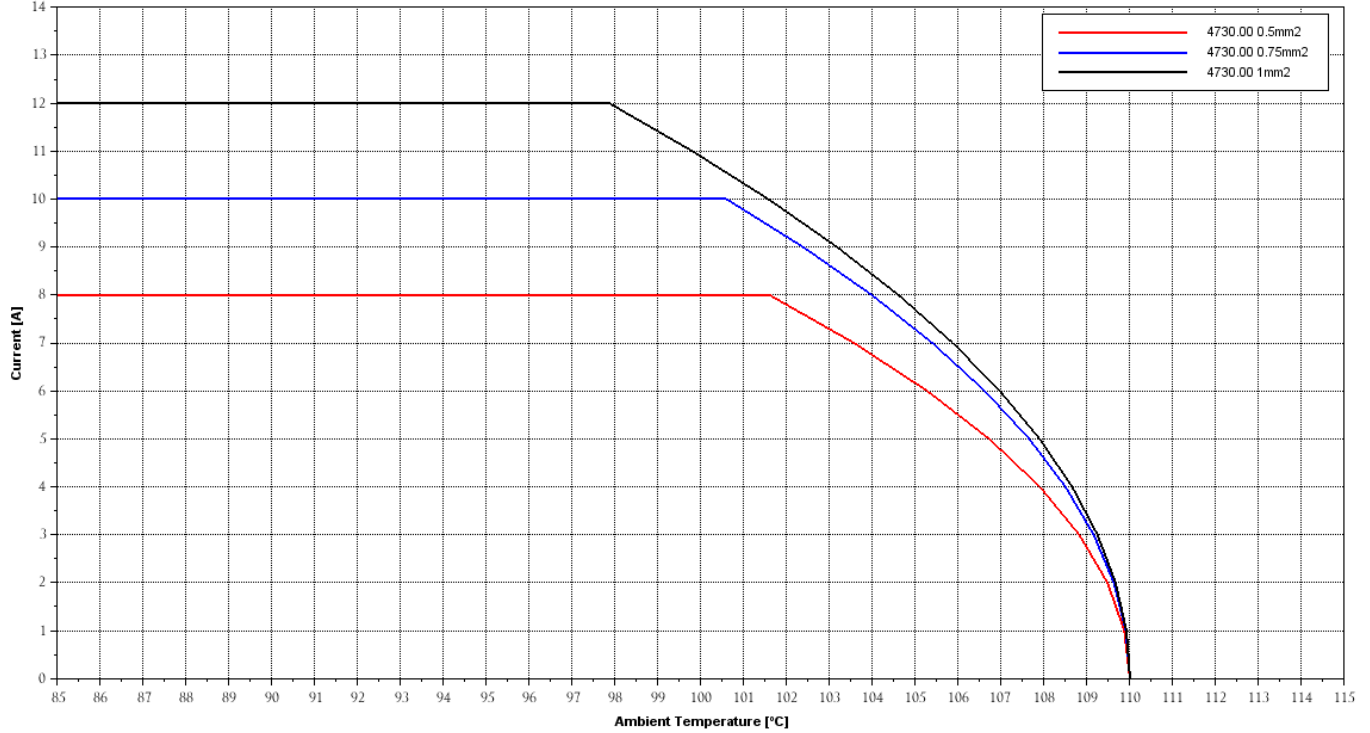
4730.**

6.3 MM (.250) UP-SEK TERMINALS

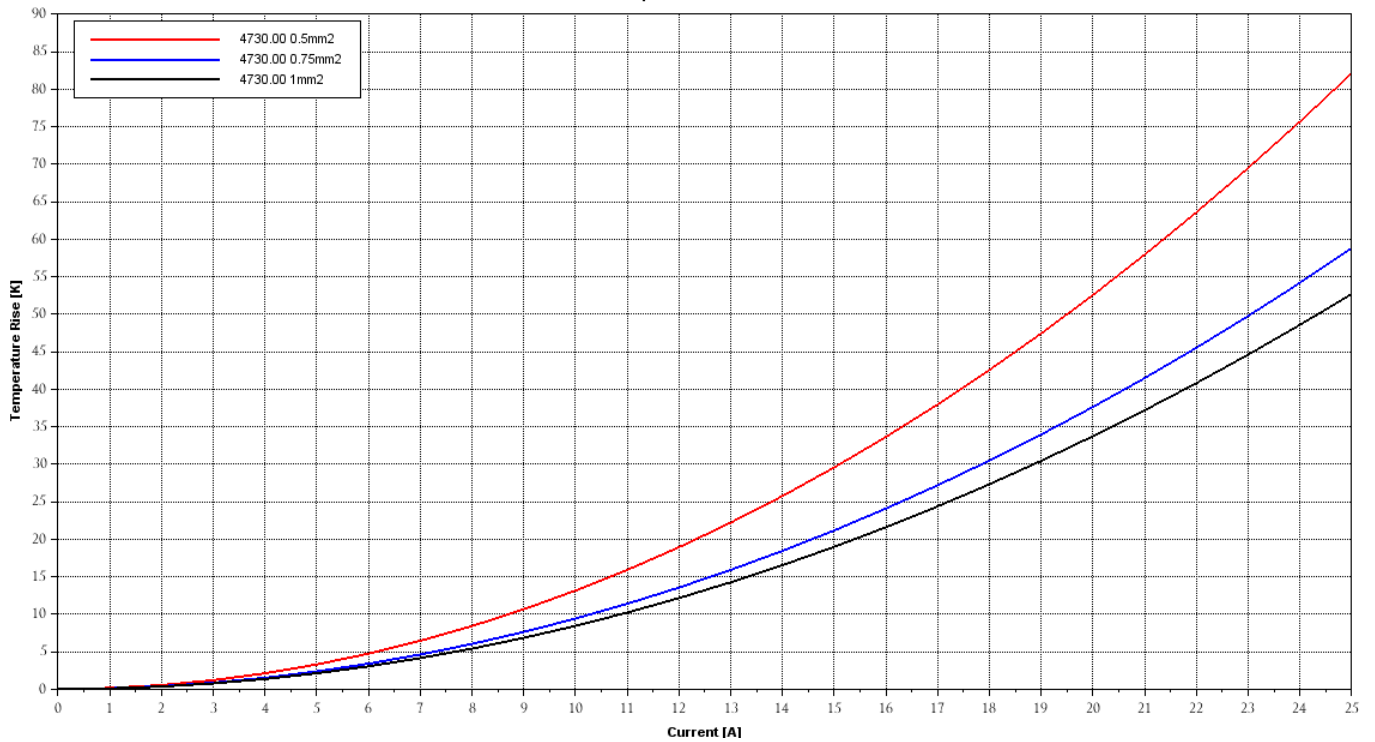


4730.00

Derating 4730.00



Temperature Rise 4730.00



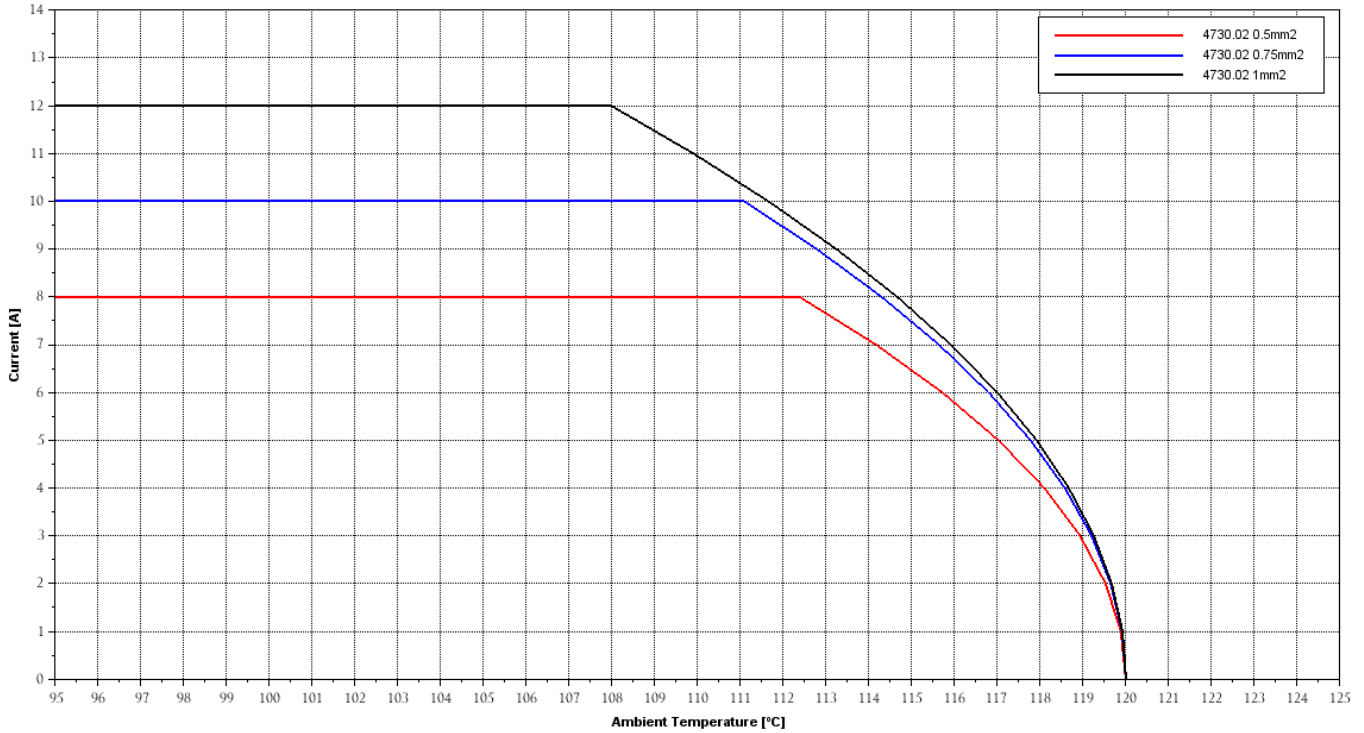
4730.**

6.3 MM (.250) UP-SEK TERMINALS

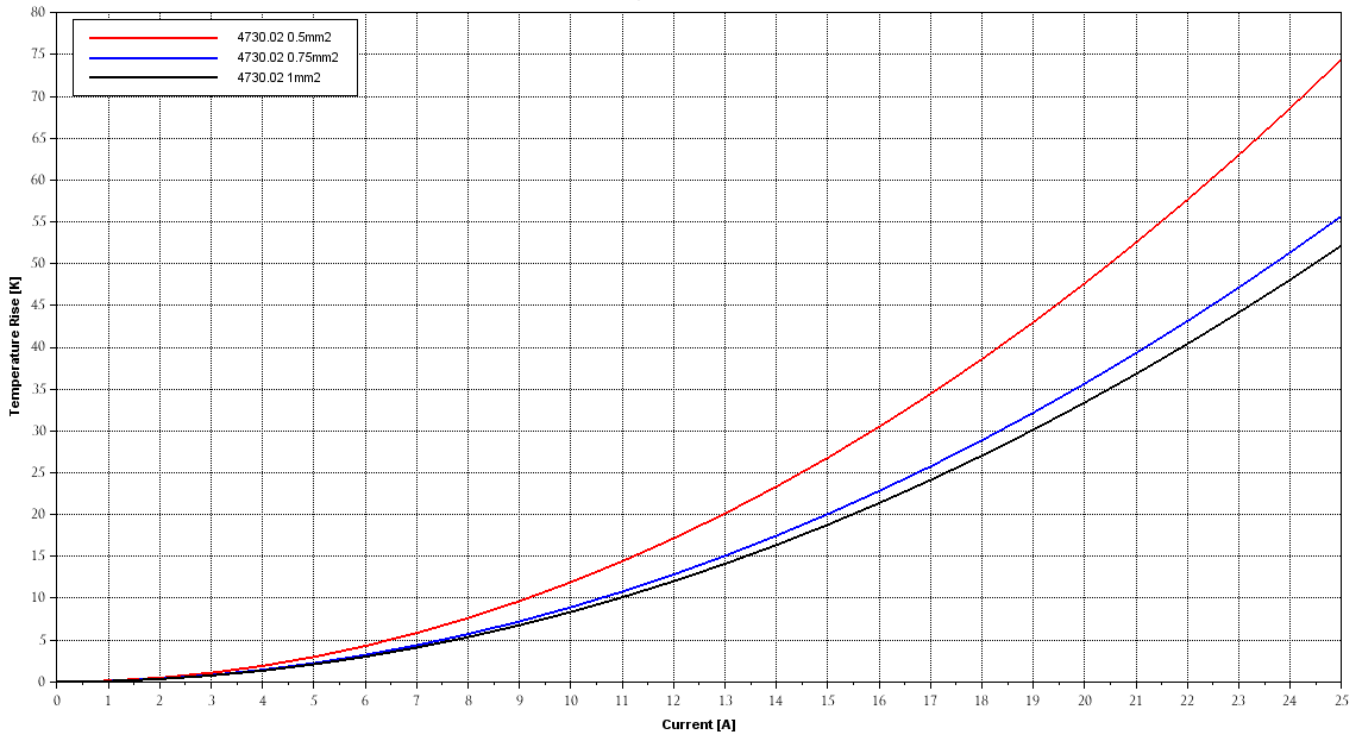


4730.02

Derating 4730.02



Temperature Rise 4730.02



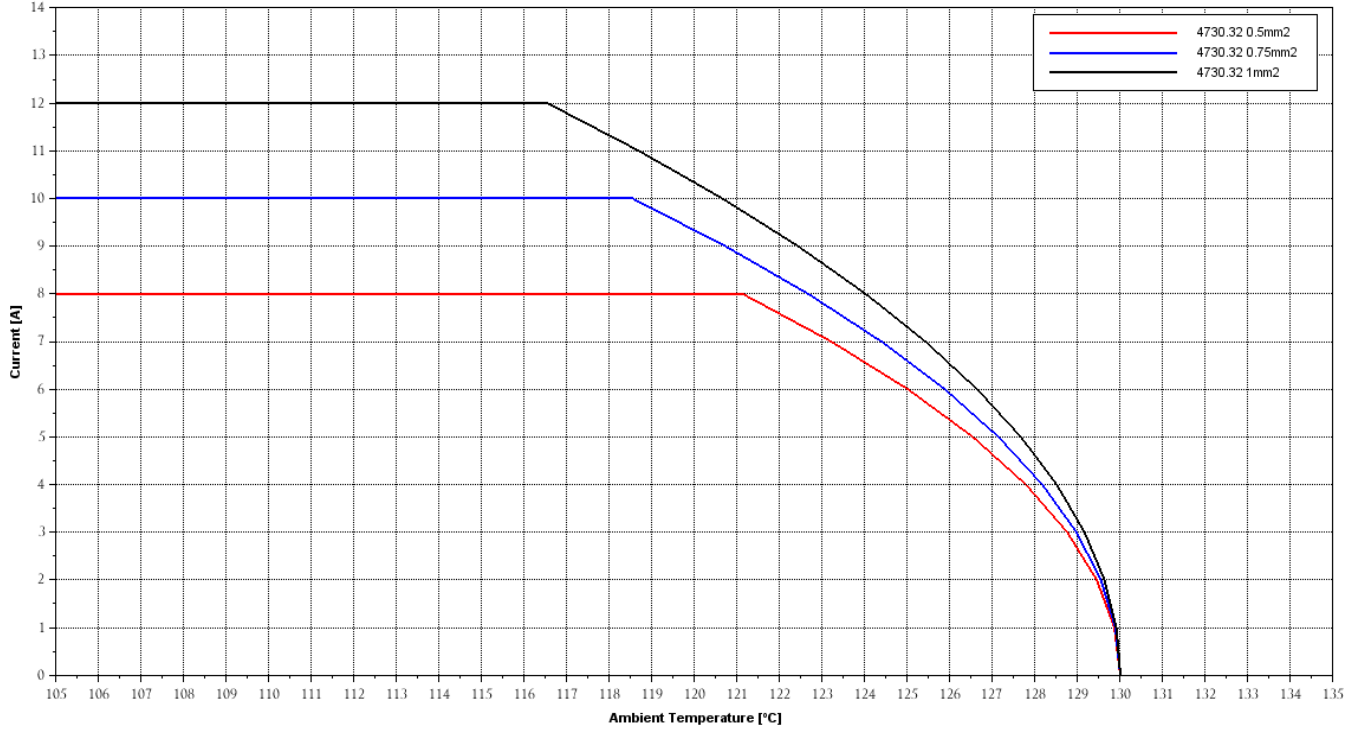
4730.**

6.3 MM (.250) UP-SEK TERMINALS

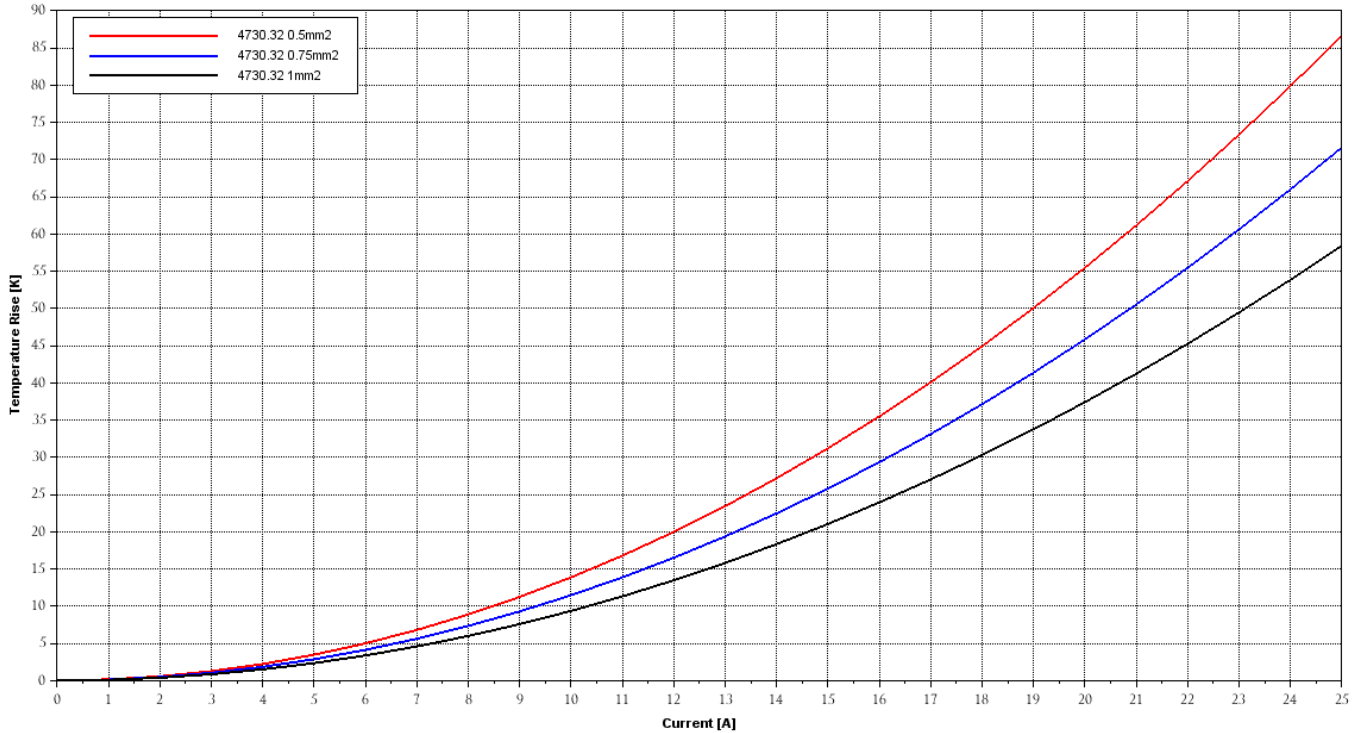


4730.32

Derating 4730.32



Temperature Rise 4730.32



Disclaimer

Data obtained from Escubedo Laboratory essays, using own methodology, cabling, equipment and original crimping tools, done in laboratory conditions and following the indicated standards, errors and omissions excepted. This document has no contractual meaning and it is published only for informative purposes. It can be changed without prior notice. The end customer has the sole responsibility to check these characteristics in its environment and with its own components, manufacturing methods and equipment. See also the full range product overview if available. For further information please visit our web site or contact us.

Rev. Nr.	Modification	Date	Created/Revised	Approved
1	Creation/Update	30/02/2012	D.Martinez	A.Calvet
2	Insertion/Withdrawal Forces name	28/11/2012	D.Martinez	A.Calvet
3	Withdrawal forces symbol change	16/05/2014	D.Martinez / E.Roura	A.Calvet
3	Update Insertion/Withdrawal forces & drawing	31/01/2015	D.Martinez / E.Roura	JC Sanchez