



3368E**
RING TERMINALS · WITH INSULATION SUPPORT



Specification	8,6 mm Plate
Ø (mm)	5,3
Wire size mm² (AWG)	0,3-0,8 (22-18)
Ø Insulation (mm)	2,1 Max

Materials, temperature and contact resistance

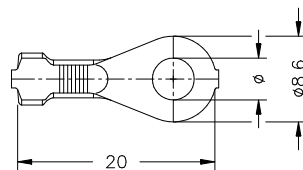
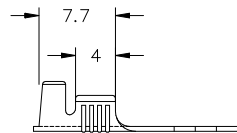
Part nr.	Material	Finishing	Max. Temp. (°C)
3368E00	Brass	Natural	110
3368E02	Brass	Tin plated	120
3368E24	Steel	Nickel-plated	300
3368E30	Bronze	Natural	120
3368E32	Bronze	Tin plated	130

Material thickness (mm)	0,4
Application tool	MN3368
Wire strip length	4.7 (±0.5) mm
Winding number	10000

Approvals



Drawing



Disclaimer

Data obtained from Escubedo Laboratory essays, using own methodology, cabling, equipment and original crimping tools, done in laboratory conditions and following the indicated standards, errors and omissions excepted. This document has no contractual meaning and it is publicised only for informative purposes. It can be changed without prior notice. The end customer has the sole responsibility to check these characteristics in its environment and with its own components, manufacturing methods and equipment. See also the full range product overview if available. For further information please visit our web site or contact us

Rev. Nr.	Concept	Date	Created/Revised	Approved
A1	Datasheet generated automatically [A1]	2018-10-01	Laboratory Dept.	E. Roura