

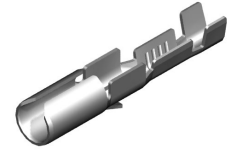
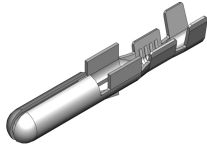
Product Overview / Características Principales

7531.70 / 8534.70

Description / Descripción:

7531 TBI Cylindrical tab / Macho cilíndrico TBI Ø 4

8534 TBI Cylindrical Receptacle / Hembra cilíndrica TBI Ø 4



Wire size range / Rango de sección de cable: 0.75 – 1.5 mm²

Maximal insulator diameter / Diámetro máximo aislante: 3.3 mm

Wire stripping / Longitud de pelada: 5.2 ± 0.5 mm

Application Tool / Util de engaste: **MN7531/MN8534**

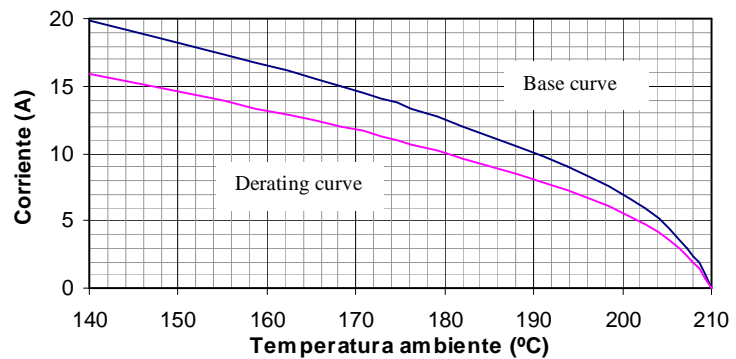
Material / Material: German Silver / Alpaca

Test values / Resultados de ensayos

Insertion and withdrawal force / Esfuerzo introducción-extracción

	1° insertion/ 1° introducción	1° withdrawal/ 1° extracción	6° withdrawal/ 6° extracción	10° withdrawal/ 10° extracción
ESCUBEDO	35 N max	35 N max	-	15 N Min.

Current carrying capacity with maximal suitable wire size ⁽¹⁾ Capacidad de paso de corriente con la sección de cable mayor ⁽¹⁾	16 A	
Maximal temperature ⁽²⁾ Temperatura máxima ⁽²⁾	210°C	Measured value Valor medido
Whole contact resistance in the tab-receptacle junction with minimal suitable wire size ⁽³⁾ Resistencia total del conjunto macho-hembra con la sección de cable menor ⁽³⁾	2.05mΩ	
Contact friction area resistance in the tab-receptacle junction with minimal suitable wire size ⁽³⁾ Resistencia de la zona de contacto del conjunto macho-hembra con la sección de cable menor ⁽³⁾	1.02mΩ	
⁽¹⁾ Corriente máxima tomando como guía CEI760 / Maximal Current according IEC760		
⁽²⁾ Temperatura máxima del material tomando como guía DIN61210 /Max material temperature according DIN61210		
⁽³⁾ Método de ensayo tomando como guía CEI760 / Essay method taking IEC760 as a guide		



Wire size / Sección	Crimp data / Datos de engastadura			Pull-out force / Fuerza de tracción DIN 46249*
	Conductor	Insulator		
	Altura (±0.03)	Anchura(±0.03)	Anchura (±0.10)	
0.75 mm ²	1.45	2.66	3.50	≥ 120 N
1.00 mm ²	1.60	2.65	3.50	≥ 160 N
1.50 mm ²	1.70	2.68	3.50	≥ 200 N

* DIN46249 is just a reference, it's not applicable / DIN46249 es únicamente una referencia, no es aplicable.

Further information on request / Para más información consultar info@escubedo.com

1	Creation & Derating	04/10/2011	David Martinez	Adam Calvet
Nr/Nº	Modification/Modificación	Date/Fecha	Name/ Nombre	Approved / Aprobado

Disclaimer:

Data obtained from Escubedo Laboratory essays, using own methodology, cablings and equipment, done in laboratory conditions and following the indicated standards, errors and omissions excepted. This document has no contractual meaning and it is published only for informative purposes. It can be changed without prior notice. The end customer has the sole responsibility to check these characteristics in its environment and with its own components, manufacturing methods and equipment. See also the full range product overview if available. For further information please visit our web site or contact us.