

Product Overview / Características Principales

4520.02

Description / Descripción: Receptacle 6.3 Special locking lance  
Hembra 6.3 Retención especial

For / Para: 6.3 x 0.8 Tab / Macho 6.3 x 0.8

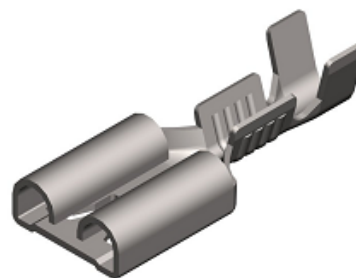
Wire size range / Rango de sección de cable: 0.5 – 1 mm<sup>2</sup>

Maximal insulator diameter / Diámetro máximo aislante: 2.5 mm

Wire stripping / Longitud de pelada: 5.3 ± 0.5 mm

Application Tool / Util de engaste: **MN4420**

Material / Material: Tin plated Brass / Latón Estañado



Test values / Resultados de ensayos

Insertion and withdrawal force / Esfuerzo introducción-extracción

	1° insertion/ 1° introducción	1° withdrawal/ 1° extracción	6° withdrawal/ 6° extracción	10° withdrawal/ 10° extracción
CEI760	80 N max	13 N min.	-	-
ESCUBEDO	45 N max	80 N min.	-	-
Typical values	41 N	107 N	-	-

Current carrying capacity with maximal suitable wire size ( IEC 760 )

12A

Capacidad de paso de corriente con la sección de cable mayor ( CEI 760 )

Maximal temperature ( DIN 61210 )

120°C

Typical value  
Valor típico

Temperatura máxima ( DIN 61210 )

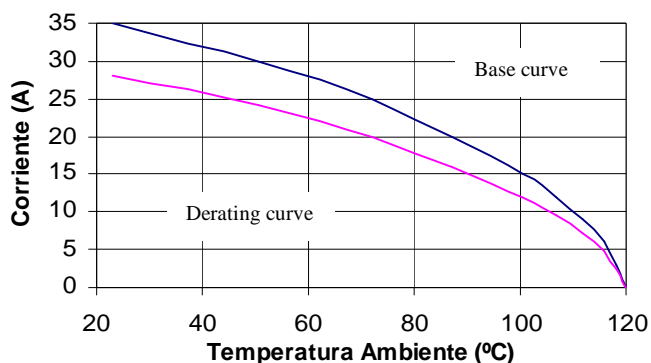
Maximal contact resistance with minimal suitable wire size ( IEC 760 )

1.35mΩ

0.41mΩ

Máxima resistencia de contacto con la sección de cable menor ( CEI 760 )

Pull-out force / Fuerza de tracción		
Wire size / Sección	DIN 46249	typical
0.5 mm <sup>2</sup>	80 N	134 N
0.75 mm <sup>2</sup>	120 N	184 N
1.0 mm <sup>2</sup>	160 N	253 N



Crimp data / Datos de engastadura

Wire size / Sección	Conductor		Insulator / Aislante	
	Altura	Anchura	Altura	Anchura
0.5 mm <sup>2</sup>	1.34	2.35	2.77	3.46
0.75 mm <sup>2</sup>	1.44	2.37	2.79	3.48
1.0 mm <sup>2</sup>	1.54	2.39	2.86	3.51

Values only valid for the application tool specified upwards / Valores válidos únicamente para el útil de engaste especificado arriba

Further information on request / Para más información consultar [info@escubedo.com](mailto:info@escubedo.com)

Nr/Nº	Modification/Modificación	Date/Fecha	Name/ Nombre	Approved / Aprobado
3	Standard max. Temp. change	18/03/2011	David Martinez	Joan Carles Sanchez
2	Crimp icon addition	09/01/2004	Marc Garangou	Luis Barea
1	Creation & Derating	19/12/2003	Marc Garangou	Luis Barea

Disclaimer:

Data obtained from Escubedo Laboratory essays, using own methodology, cablings and equipment, done in laboratory conditions and following the indicated standards, errors and omissions excepted. This document has no contractual meaning and it is published only for informative purposes. It can be changed without prior notice. The end customer has the sole responsibility to check these characteristics in its environment and with its own components, manufacturing methods and equipment. See also the full range product overview if available. For further information please visit our web site or contact us.