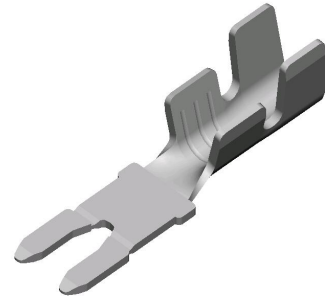




Product Overview / Características Principales

3870.02

Description / Descripción:	Terminal Horquilla UP-MAG UP-MAG Fork terminal
Wire size range / Rango de sección de cable:	0.3 – 0.9 mm ²
Maximal insulator diameter / Diámetro máximo aislante:	2.5 mm
Strip – length / Longitud de pelada:	3.8 ± 0.5mm
Application Tool / Util de engaste:	MN3880
Material / Material:	Tin plated Brass / Latón Estañado
Espesor / Thickness :	0.50 mm
Female part number:	6900/6901/6902/6904/6906/6908 Tin plated Brass

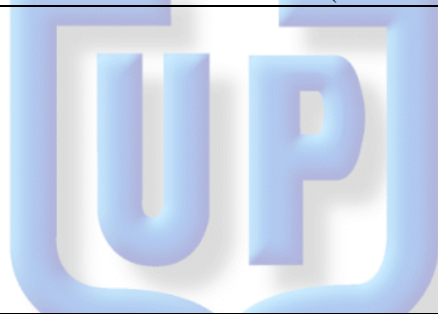


Test values / Resultados de ensayos

Insertion and withdrawal force (Efforts orientation according Connection)

	1° insertion thickness female 0.32mm	1° withdrawal thickness female 0.32mm	1° insertion thickness female 0.4mm	1° withdrawal thickness female 0.4mm
values	≤ 12 N	≥ 25 N	≤ 18 N	≥ 35 N

Current carrying capacity with maximal suitable wire size (IEC 760) Capacidad de paso de corriente con la sección de cable mayor (CEI 760)	8A	
Maximal temperature (DIN 46249) Temperatura máxima (DIN 46249)	110°C	Typical value Valor típico
Maximal contact resistance with minimal suitable wire size (IEC 760) Máxima resistencia de contacto con la sección de cable menor (CEI 760)	-	0.72mΩ



Crimp data / Datos de engastadura

Wire size / Sección	Conductor (±0.05)		Insulator (±0.1)	Pull-out-force	
	Altura	Anchura	Anchura	DIN 46249	typical
0.30 mm ²	1.40	2.37	3.25	-	60 N
0.50 mm ²	1.45	2.37	3.26	≥80 N	100 N
0.75 mm ²	1.50	2.38	3.26	≥120 N	140 N
0.90 mm ²	1.55	2.38	3.27	≥120 N	180 N

Values only valid for the application tool specified upwards / Valores válidos únicamente para el útil de engaste especificado arriba

Further information on request / Para más información consultar laboratori@escubedo.com

Nr/Nº	Modification/Modificación	Date/Fecha	Name/ Nombre	Approved / Aprobado
3	Crimp data & pull-out-force modifitacion	14/07/2010	David Martinez	Joan Carles Sanchez
2	Insertion and withdrawal force Modification	02/07/2009	David Martinez	Joan Carles Sanchez
1	Creation	08/06/09	David Martinez	Joan Carles Sanchez

Disclaimer:

Data obtained from Escubedo Laboratory essays, using own methodology, cablings and equipment, done in laboratory conditions and following the indicated standards, errors and omissions excepted. This document has no contractual meaning and it is published only for informative purposes. It can be changed without prior notice. The end customer has the sole responsibility to check these characteristics in its environment and with its own components, manufacturing methods and equipment. See also the full range product overview if available. For further information please visit our web site or contact us.