

## 4730F\*\*

### 6.3 (.250) TYPE SERIES · RECEPTACLES

#### SELF-LOCKING RECEPTACLES



**Specification** Standard self-locking terminals for manual disconnection

**For male (mm)** 6,3x0,8

**Wire size mm<sup>2</sup> (AWG)** 0,2-0,6 (24-20)

**Ø Insulation (mm)** 1,8-2,5

**Materials, temperature and contact resistance**

Part nr.	Material	Finishing	Max. Temp. (°C)
4730F00	Brass	Natural	110
4730F02	Brass	Tin plated	120
4730F30	Bronze	Natural	120
4730F32	Bronze	Tin plated	130

**Material thickness (mm)** 0,4

**Max. rated current**

Wire section	4730F00 / 02 / 30 / 32
0.25 mm <sup>2</sup>	(T.B.D.)
0.30 mm <sup>2</sup>	(T.B.D.)
0.35 mm <sup>2</sup>	(T.B.D.)
0.50 mm <sup>2</sup>	8A

**Insertion / Withdrawal forces**

	4730F00 / 02 / 30 / 32
1st Insertion (max)	35N <sup>1</sup>
1st Withdrawal (max)	30N <sup>1</sup>
1st Withdrawal (min, locking enabled)	90N <sup>1</sup>


<sup>1</sup> Valid for Natural Brass Tab

**Security function**

Self-locking function prevents disconnection by pulling the cable. Disconnection is possible disabling the locking function, pressing the lever manually or sliding the connector (see withdrawal forces). It allows several connections-disconnections maintaining the functional features.

**Wire strip length** 5.5 (±0.5) mm

**Crimping parameters & pull out force**

Wire section (±10%)	Conductor 		Insulator	Pull-out force (N)
	Height (mm)	Width (mm)		
0.20 mm <sup>2</sup>	1.20 (±0.03)	2.06 (±0.03)	3.07 (±0.10)	28N @ 60s
0.35 mm <sup>2</sup>	1.25 (±0.03)	2.07 (±0.03)	3.07 (±0.10)	40N @ 60s
0.50 mm <sup>2</sup>	1.30 (±0.03)	2.07 (±0.03)	3.08 (±0.10)	56N @ 60s
0.60 mm <sup>2</sup>	1.35 (±0.05)	2.07 (±0.05)	3.08 (±0.10)	56N @ 60s

Values only valid for the application tool specified upwards. The insulator widths are only indicative as they are dependent on the sheath thickness of the wire used.

**Winding number** 8000

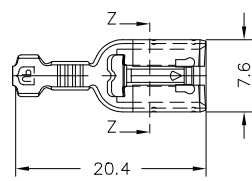
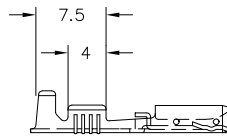
**Approvals**



**4730F\*\***  
**6.3 (.250) TYPE SERIES · RECEPTACLES**  
**SELF-LOCKING RECEPTACLES**



Drawing



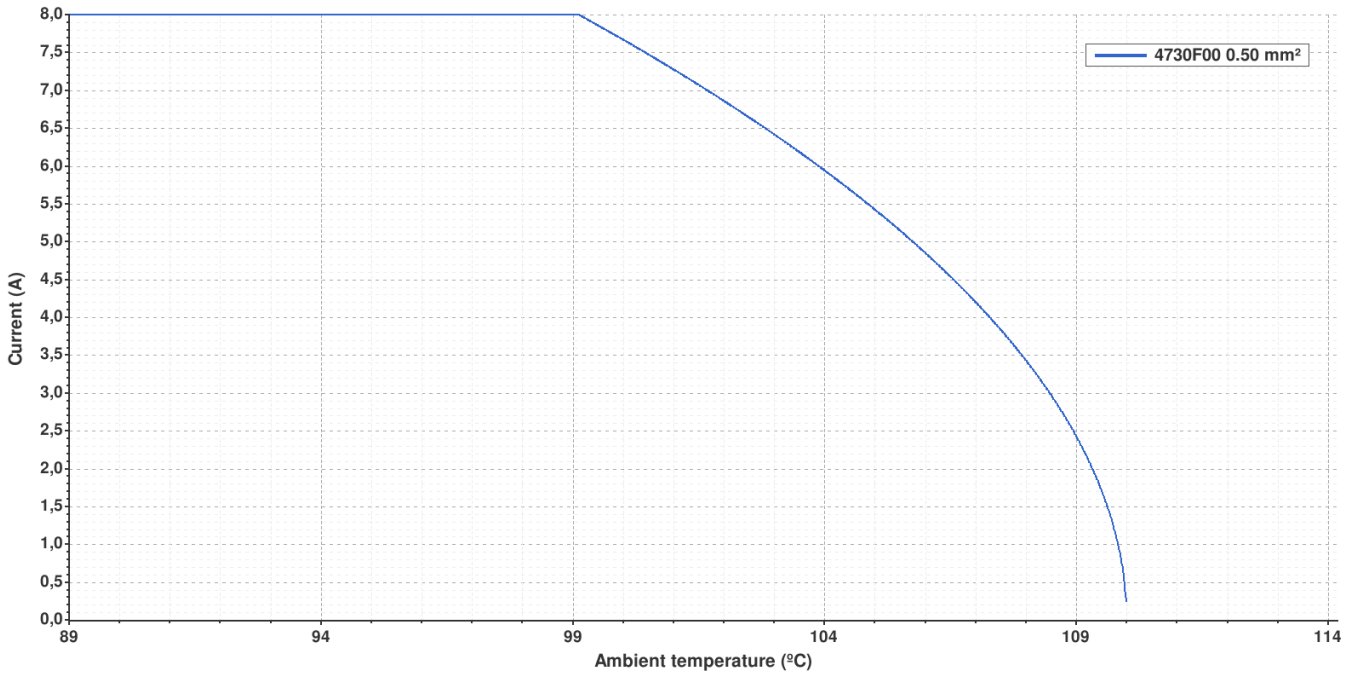
Secc. Z-Z



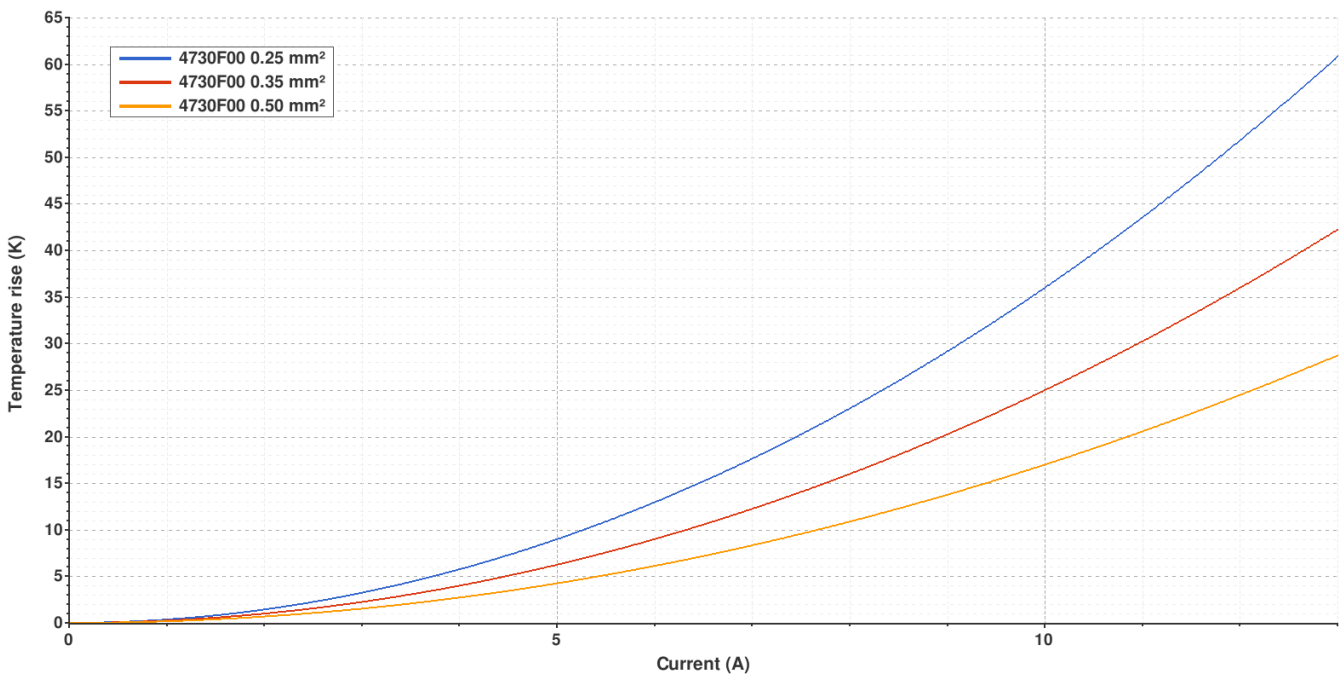
**4730F00 NATURAL BRASS**  
**6.3 (.250) TYPE SERIES · RECEPTACLES**  
**SELF-LOCKING RECEPTACLES**



**Derating curve** Current carrying capacity vs. Ambient temperature



**Temperature rise curve** Terminal temperature rise due to the current carried



Valid for Natural Brass Tab

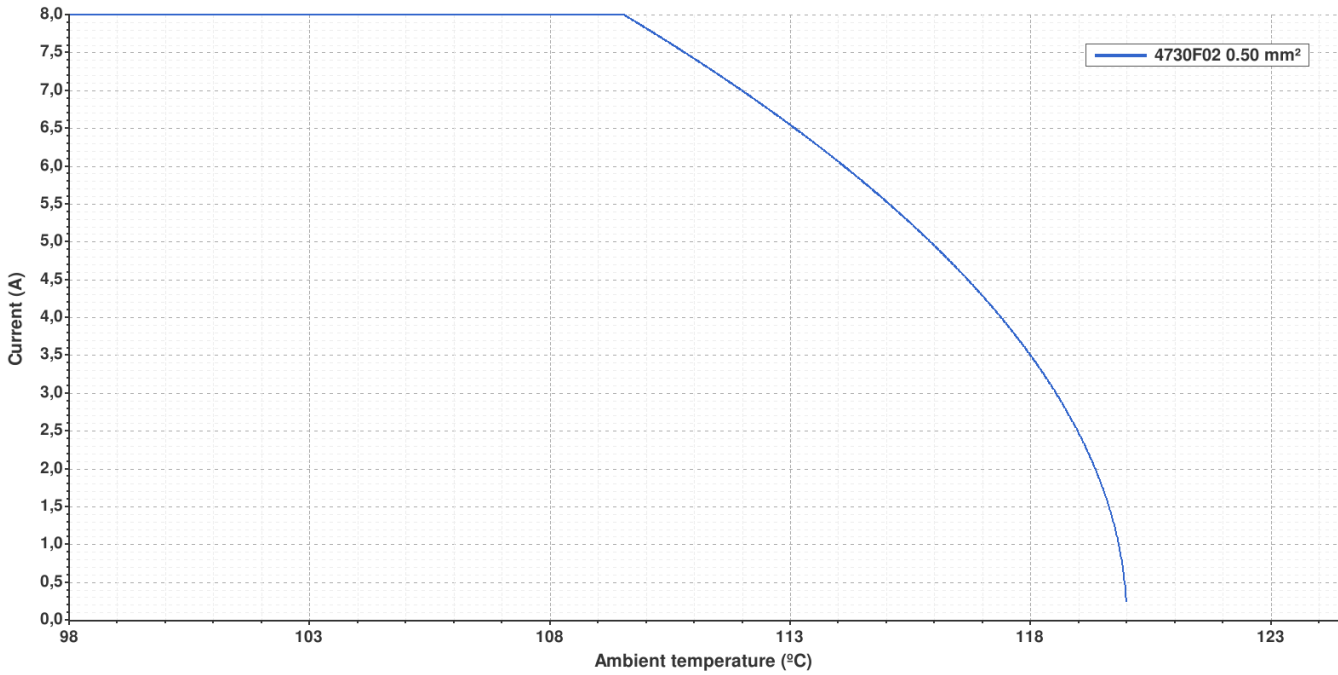
**4730F02 TIN PLATED BRASS**

**6.3 (.250) TYPE SERIES · RECEPTACLES**  
**SELF-LOCKING RECEPTACLES**



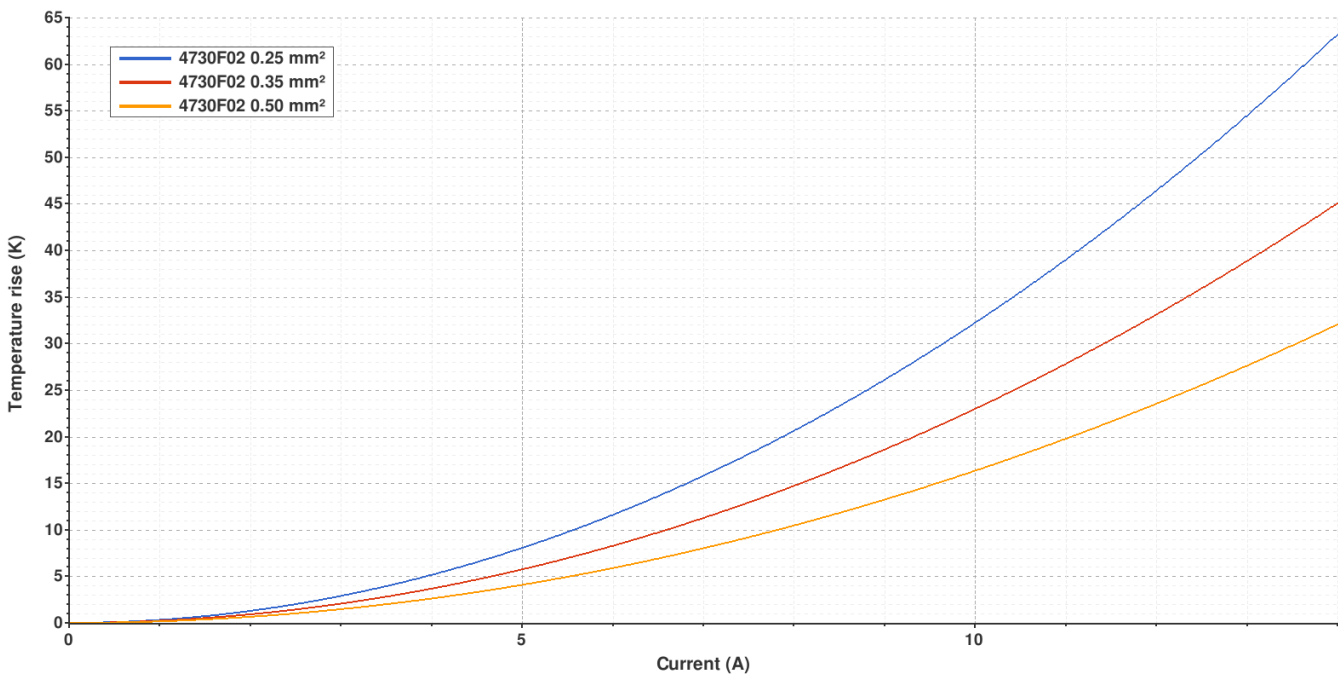
**Derating curve**

Current carrying capacity vs. Ambient temperature



**Temperature rise curve**

Terminal temperature rise due to the current carried



Valid for Natural Brass Tab

**4730F\*\***  
**6.3 (.250) TYPE SERIES · RECEPTACLES**  
**SELF-LOCKING RECEPTACLES**



(T.B.D.): To be determined

**Disclaimer**

Data obtained from Escubedo Laboratory essays, using own methodology, cablings, equipment and original crimping tools, done in laboratory conditions and following the indicated standards, errors and omissions excepted. This document has no contractual meaning and it is publicised only for informative purposes. It can be changed without prior notice. The end customer has the sole responsibility to check these characteristics in its environment and with its own components, manufacturing methods and equipment. See also the full range product overview if available. For further information please visit our web site or contact us

Rev. Nr.	Concept	Date	Created/Revised	Approved
A4	Change company name and logo	2021-10-21	E.Roura (laboratory dept.)	M.Codina (engineering dept.)
A3	Crimping parameters updated	2021-04-09	E.Roura (laboratory dept.)	M.Codina (engineering dept.)
A2	Secutiry function updated	2021-02-22	E.Roura (laboratory dept.)	M.Codina (engineering dept.)
A1	Datasheet generated automatically [A1]	2020-11-16	E.Roura (Laboratory dept.)	M.Codina (Engineering dept.)

Escubedo Connection Systems, S.A.U. · Ctra. de Girona-Olot Km. 35,5 · 17843 Riudellots de la Creu · Girona · Spain  
 Tel.: 34 972 171 706 · Fax: +34 972 171 714 · [info@escubedo.com](mailto:info@escubedo.com) · [www.escubedo.com](http://www.escubedo.com)